



0800 VANDA NZ  
(0800 826 326)  
Sales@vanda.co.nz  
www.vanda.co.nz



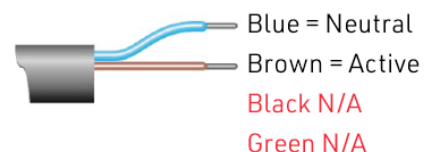
## Somfy Altus 40 RTS 3/30



Specification	Details
Item Number/Code	VA.SMFY.2000 #1020172
Head Colour	Black/Orange
Motor Length	512mm
Minimum Blind Width	587mm
Maximum Linked Blind Size	12.6 m <sup>2</sup>
Lifting Capacity	9 kg
Nominal Torque	3.0 Nm
Nominal Speed	30 RPM
Limit Switch Type	Electronic
Index Protection Rating	IP 44 (for indoor use only)
Sound Level	50 dBa (at nominal speed)
Power Supply	195.5V – 255V
Power Consumption	90W
Thermal Time	4 Minutes
Control Options	RF Remote, RF Wall Switch, TaHoma Switch

**Somfy** Altus/Sonessse 40 RTS Motor (Radio Technology Somfy) wiring:

- Use 2 of 4 core Universal (#9015792/805/806 – 2.3/5/10M) Molex (NO EARTH)



# Altus 40 RTS

PRODUCT SPECIFICATIONS



# The precise and simple solution for the interior window covering market

## PRODUCT MAIN FUNCTIONALITIES



**Compatible with Solar protection functions**



**Remote limit setting**



**Round head**  
for reduced dimensions.



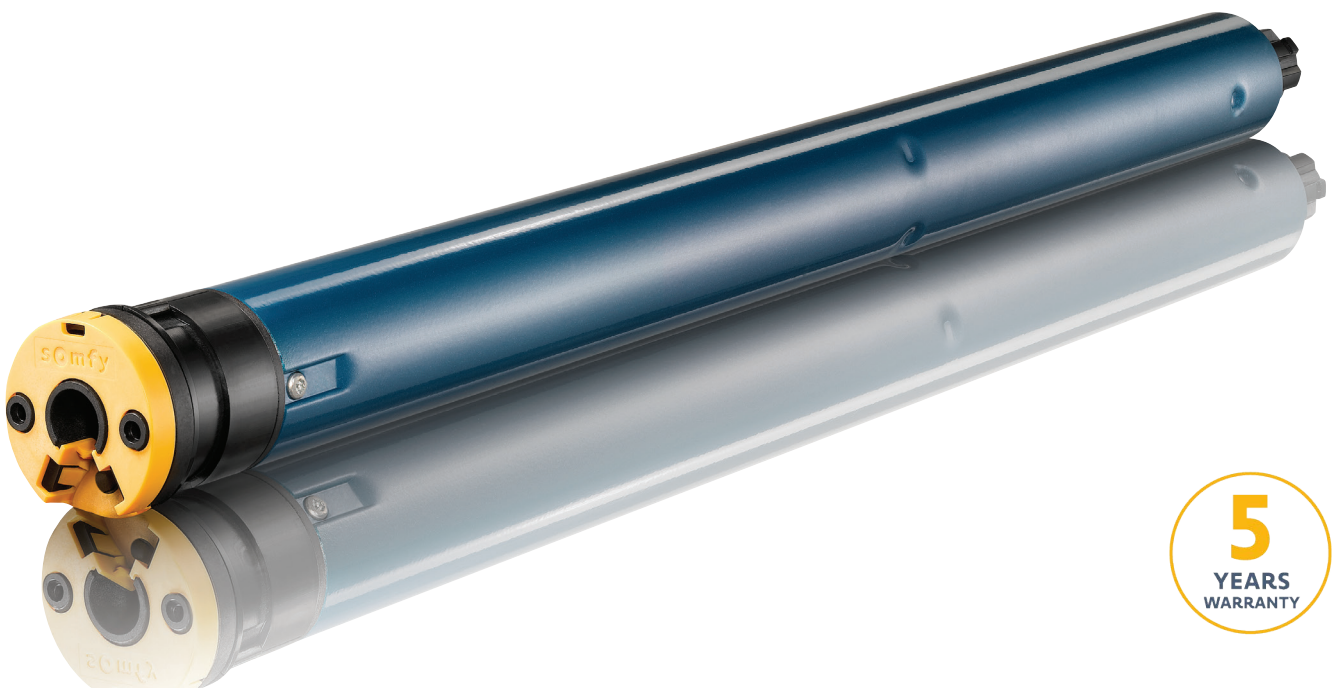
**"my" favourite**  
In one click move the blind to your favourite position.

## Somfy +

Quiet operation and all the benefits of RTS technology.

## RECOMMENDED TO SET WITH:

Universal test lead  
(ref. 9027064)



**somfy**

# Altus 40 RTS

## PRODUCT SPECIFICATIONS



### BENEFITS FOR PROFESSIONALS

#### Easy Integration

- Suitable for tubes diameter 40 mm or more (internal diameter)
- Available with inline connector for ease of programming
- Integrated antenna

#### Setting from a distance

- Up and down end limits set by remote control

### BENEFITS FOR END USERS

#### Simple, effortless control

- Quiet operation
- Move your blinds effortlessly and remotely thanks to the radio control
- Move your blinds to your favourite "my" position in one click

#### Access to RTS product range for more benefits

- Solar protection functions compatibility

### COMPATIBLE END-PRODUCTS



Roller blinds



Roman blinds



Projection screens

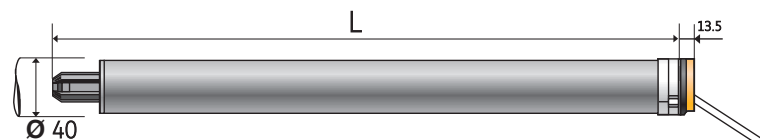
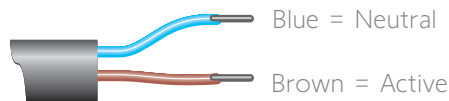
### TECHNICAL DATA

<b>Thermal Time</b>	4 minutes
<b>Supply</b>	AC
<b>Index protection rating</b>	IP 44 (indoor use only)
<b>Limit switch unit</b>	Electronic
<b>Limit switch capacity</b>	Unlimited
<b>Temperature working range</b>	-10°C to +40°C
<b>Electric insulation</b>	Class II
<b>Capacity of memory</b>	12 different transmitters plus 3 wireless sensors
<b>Coding</b>	Rolling code with 16 million possibilities

### PERFORMANCES

	3/30	13/10
<b>Nominal Voltage</b>	230V / 50Hz	
<b>Torque (Nm)</b>	3	13
<b>Speed (rm)</b>	30	10
<b>Rated Current (A)</b>	0.42	0.52
<b>dBA</b>	50	52
<b>End-limit unit versions available</b>	RTS	RTS
<b>Radio Frequency</b>	433, 42 MHz	
<b>Item Number</b>	1020124	1024171
<b>Item Number with inline connector</b>	1020172	1024234

230 V



### DIMENSIONS

<b>L (mm)</b>	497	497
---------------	-----	-----